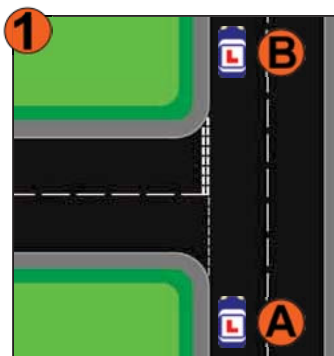


- 1 POM forward
- 2 Look into road for obstructions & signal if necessary
- 3 Stop 3 car lengths from the junction and a foot from the kerb
- 4 Use mirror to guide you, maintain the gap from the kerb
- 5 Check over shoulder for oncoming vehicles
- 6 Reverse back for 3 car lengths or until you are asked to stop



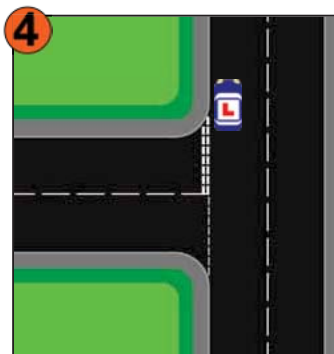
Move car from A-B



When passing the side road, look for obstructions and signal after the turning if necessary



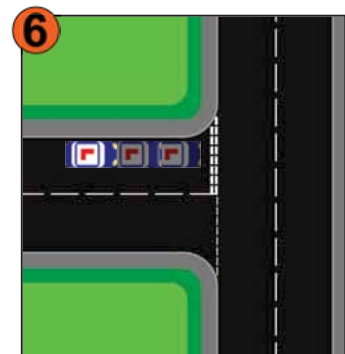
Check no cars are approaching from behind and then select reverse gear



Reverse straight until the front passenger's door handle meets the first curved kerbstone



Check over your shoulder and steer to nearly full lock, taking off the steers to ensure you don't get too close to the kerb. Make adjustments to maintain the gap's size



When into the new road, straighten the wheels and reverse straight. Make SMALL adjustments if required to ensure you do not zigzag down new the road.