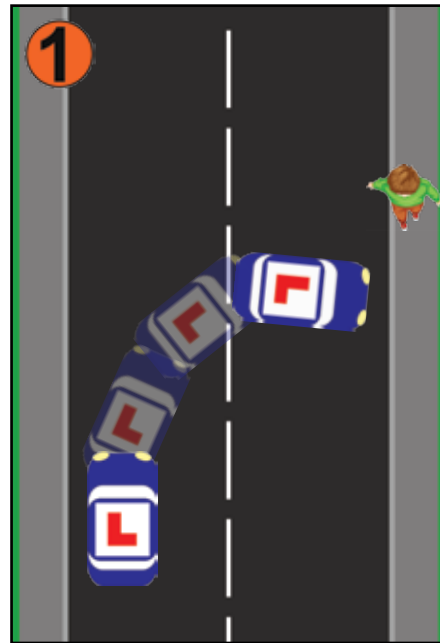
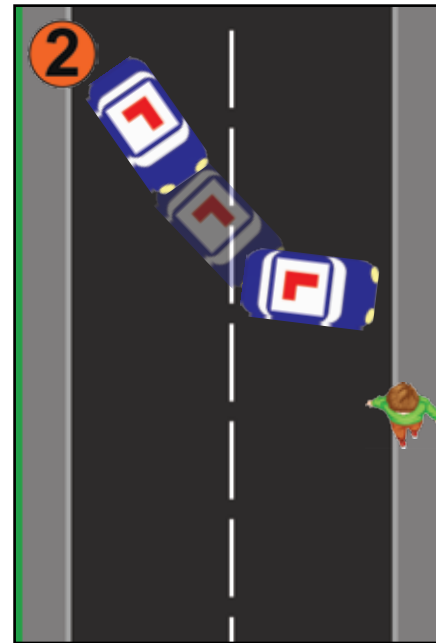


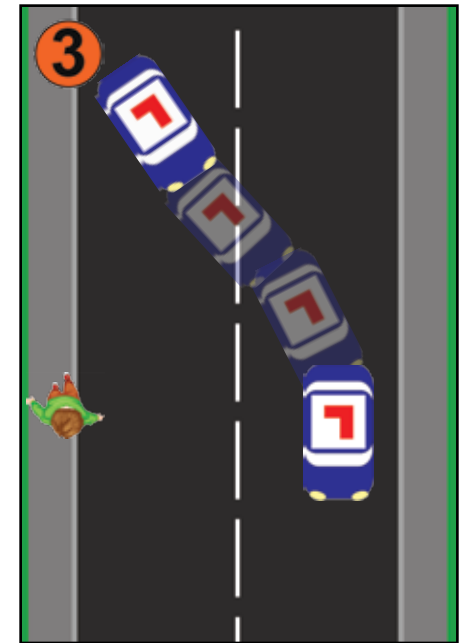
**Safe, Legal & Convenient?
Width of Road?
Steepness of Camber?
Street Furniture?**



- POM (1st gear)
- Slow ahead
- Full right lock
- Steer left when near kerb



- POM (reverse gear)
- Slow back
- Full left lock
- Steer right when near kerb

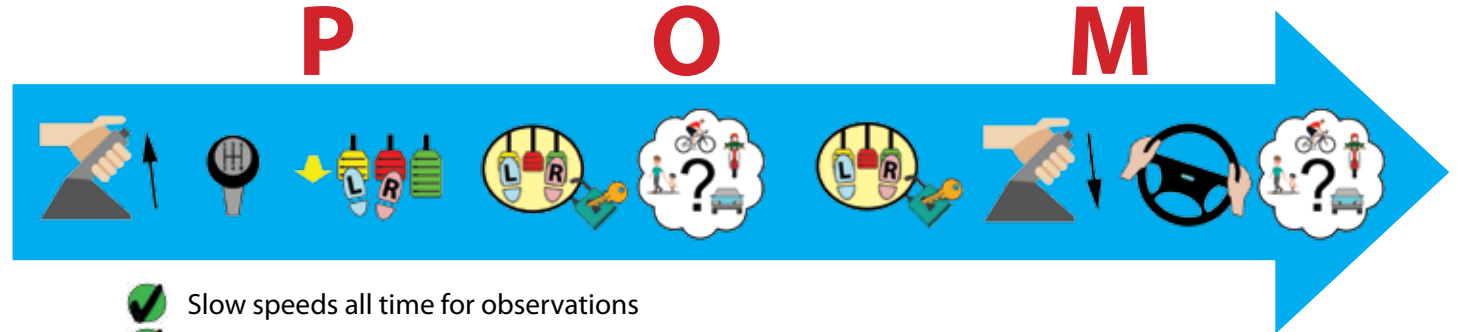


- POM (1st gear)
- Slow ahead
- Full right lock
- Pull over in SLC place

P

O

M



- ✓ Slow speeds all time for observations
- ✓ Stop & wait for other motorists or pedestrians in your 'danger zone'
- ✓ Steers the 'opposite way' when meeting the kerb = fewer points to your manoeuvre